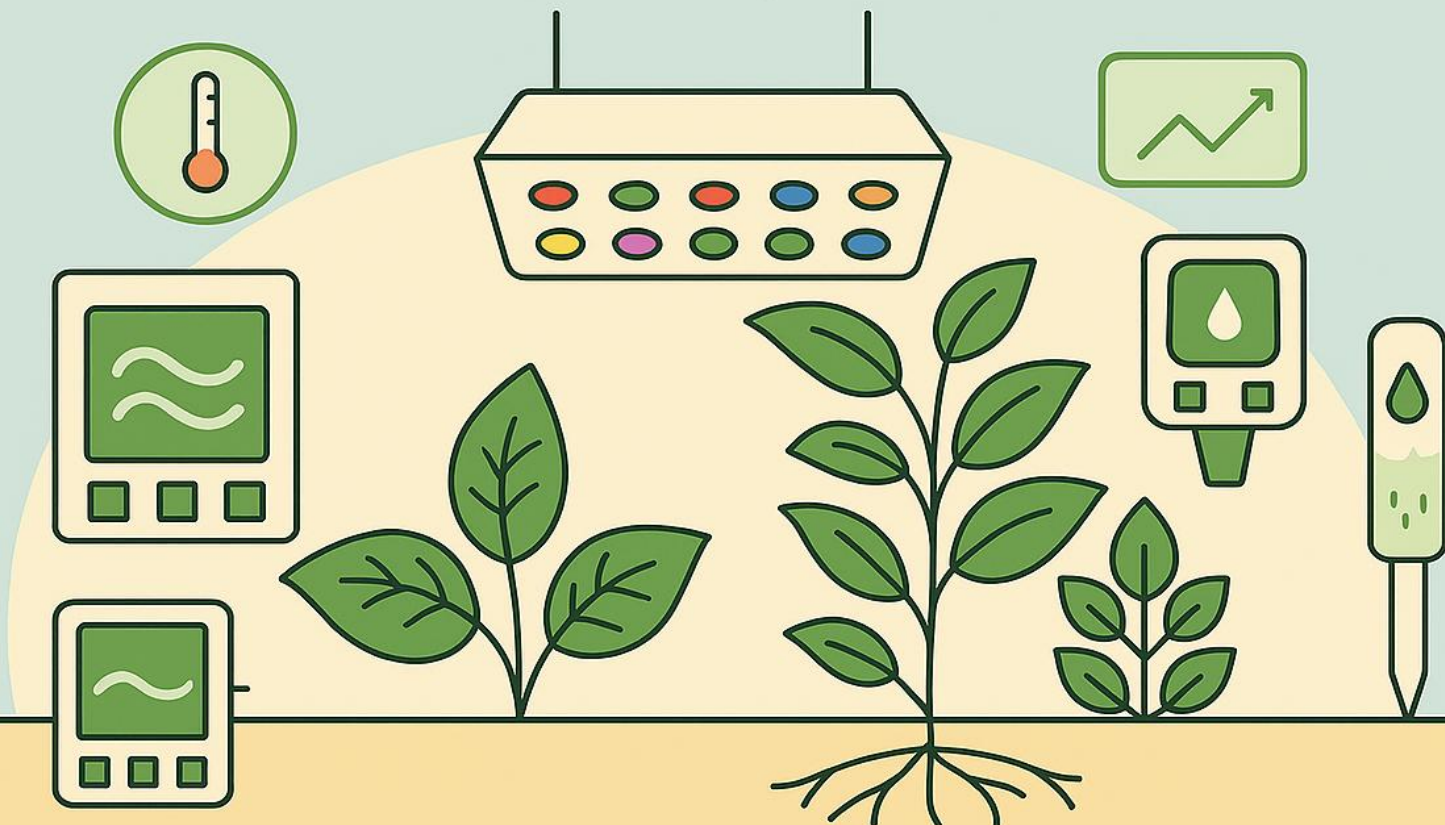


# 2025 KU-PBT International Symposium

## CURRENT TRENDS IN CONTROLLED ENVIRONMENT FOR PLANT PRODUCTION

Advancement in Measuring the Plant Environment



**When** December 23, 2025 (Tuesday) 2 PM  
**Where** Life Science Building West - Auditorium

### Invited Speakers

Plant-driven greenhouse LED lighting control using chlorophyll fluorescence  
Dr. Suyun Nam (University of Georgia)

Photobiological responses and mechanistic interpretations of far-red light  
and its interactions with other environmental factors  
Dr. Jiyong Shin (Michigan State University)

Advancement of rootzone sensing-based best water and nutrient management practices  
Prof. Jongyun Kim (Korea University)